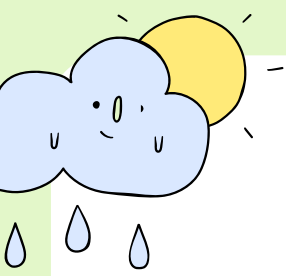




CLIMATE-RESILIENT AMSTELKWARTIER

**Small household actions to reduce flooding,
heat stress and support biodiversity**

A simple resident guide for balconies,
façades, roofs and shared spaces



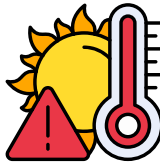
Why this guide?

Amstelkwartier faces three connected urban challenges: heavy rainfall, hot summer days and limited space for biodiversity.

Small household actions can help. Balcony plants, façade gardens, rain barrels and permeable surfaces can slow down rainwater, provide cooling and create small habitats for insects and birds.



Slow down runoff



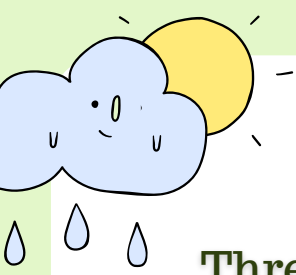
Reduce heat around homes



Support insects and birds

Every small green space counts

One planter, one façade garden or one removed tile can already make a difference.



Three Neighbourhood Challenges

Heavy Rainfall

When rain falls quickly, water can collect on streets and paved areas. Hard surfaces make it difficult for rainwater to soak into the ground.



Heat Stress

Concrete, asphalt and stone absorb heat during the day and release it slowly. This can make the neighbourhood feel warmer during hot periods.



Limited Biodiversity

Dense urban areas often have fewer spaces for plants, insects and birds. Small green areas can help create habitats and ecological stepping stones.



1 : Make Space for Rainwater

Install a Rain Barrel

A rain barrel collects rainwater from roofs and downpipes. The stored water can later be used for balcony plants, façade gardens or shared/small green spaces.

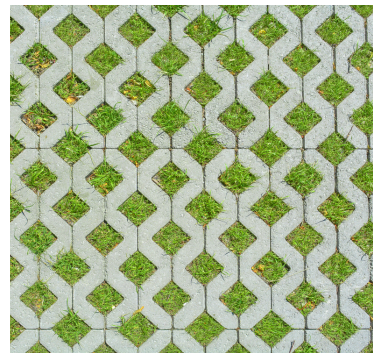


Remove Tiles, Add Greenery

Replace unnecessary paving with plants, grass, gravel or permeable materials. This helps rainwater soak into the ground instead of flowing directly into the street.

Use Permeable Paving

Choose paving that allows rainwater to pass through or drain between gaps. This reduces surface runoff and helps manage heavy rainfall.



Reduces runoff



Provides cooling



Supports biodiversity

2. Cool Your Home and Street

Balcony Planting

Plants on balconies provide shade, cooling and small food sources for insects. Even a few planters can help soften hard building surfaces.



Façade Gardens

A façade garden is a small strip of plants along the edge of a building. It can cool the street edge, make entrances greener and support pollinators.

Shade with Greenery

Climbing plants, shrubs or small trees can shade walls, windows and paved areas. This helps reduce heat stored by hard surfaces.



Reduces runoff



Provides cooling

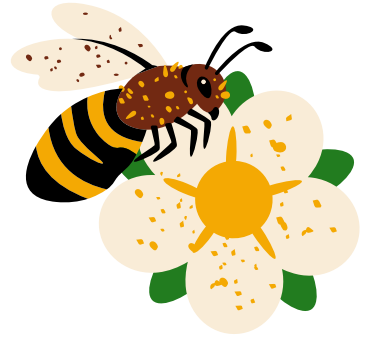


Supports biodiversity

3. Support Urban Biodiversity

Plant for Pollinators

Add native flowers, herbs and grasses to balconies, façades or gardens. These provide food for bees, butterflies and other useful insects.



Create Small Habitats

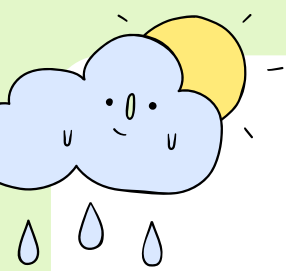
Balcony planters, façade gardens, green roofs, courtyards and gardens can provide shelter and movement routes for insects and birds.

Avoid Pesticides

Avoid chemical pesticides where possible. They can harm bees, butterflies and other beneficial insects that support urban ecosystems.



Supports biodiversity



Useful Links and Support

Some measures may be supported by subsidies, local programmes or neighbourhood initiatives. Always check the latest conditions before starting.

Municipality of Amsterdam – Subsidie Groen in Amsterdam

Green roofs, removing tiles and private greenery
www.amsterdam.nl/subsidies

Amsterdam Weerproof / Rainproof

Rainproof homes, gardens, roofs and streets
www.weerproof.nl

Waterschap Amstel, Gooi en Vecht – Subsidie voor Groen en Water

Collective green and water initiatives
www.agv.nl

Milieu Centraal – Groenesubsidiewijzer

Check green subsidies by location
www.milieucentraal.nl

Check current eligibility, conditions and deadlines before starting any measure.



START SMALL Make an Impact

Small actions can create visible change.

By adding greenery, reducing hard surfaces and storing rainwater, residents can help Amstelkwartier become cooler, greener and more rainproof.

Some measures may require permission.

**One planter added. One tile removed. One rain barrel installed.
Together, these actions can support a healthier neighbourhood.**



Created as part of a graduation research project on water-sensitive nature-based solutions in Amstelkwartier.